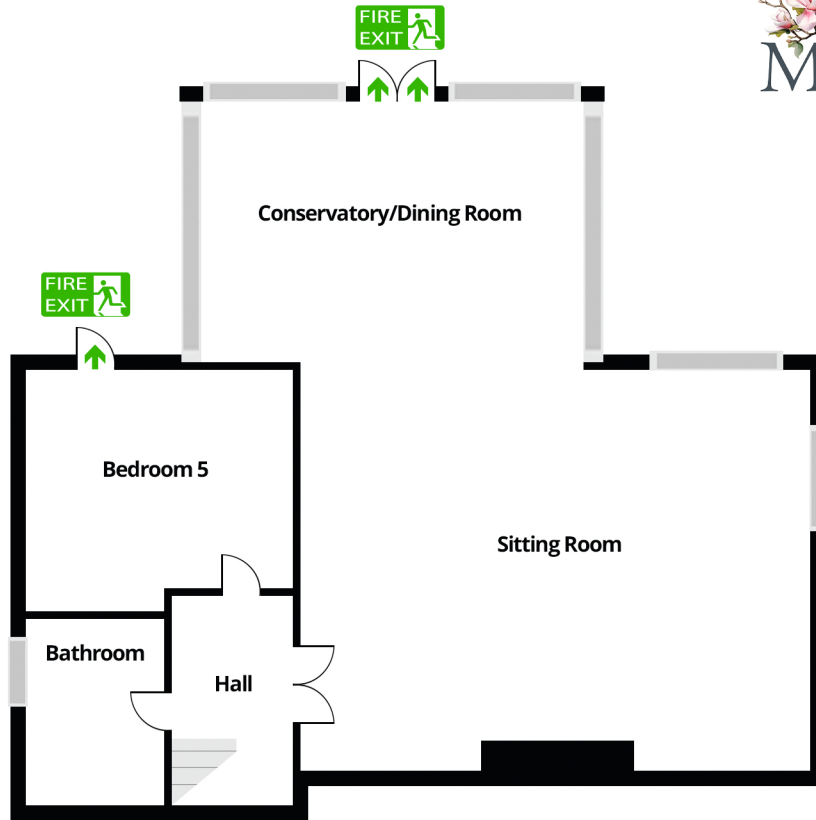


Lower Ground Floor

Approx. 93.4 sq.metres (1005.4 sq. feet)



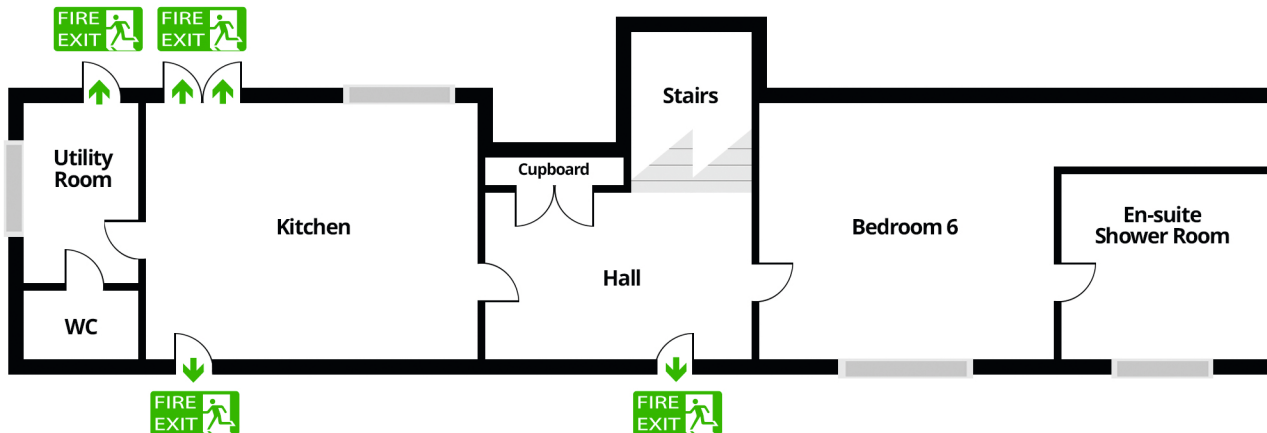
First Floor

Approx. 71.0 sq.metres (763.9 sq. feet)



Ground Floor

Approx. 69.9 sq. metres (752.2 sq. feet)



Second Floor

Approx. 31.3 sq. metres (336.7 sq feet)

